



Transitions Mental Health Association

# Annual Report

FUNDING SOURCES, REVENUE TRENDS, CLIENTS SERVED & SATISFACTION SURVEY RESPONSES

*Inspiring hope, growth, recovery and wellness in our communities.*

Fiscal Year 2010 – 2011

## Training and Jobs Placement

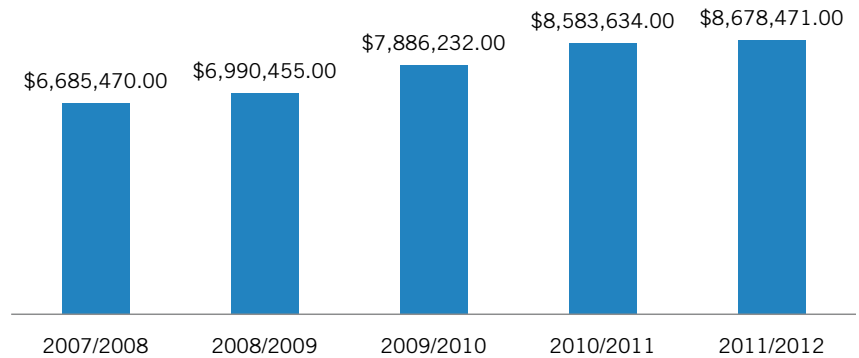
TMHA vocational programs provide real-world job training and meaningful employment.

Growing Grounds Program Placement	Mental Health Client Totals
Farm & Wholesale Nursery, San Luis Obispo	62 Employed
Growing Grounds Farm, Santa Maria	50 Employed
Growing Grounds Downtown Store, San Luis Obispo	20 Job-Skills Training Participants
Supported Employment Program	57 Total Hired in Community

In TMHA's 2011 Consumer Satisfaction Survey, 22% of all respondents reported that they were currently employed, an impressive 7% above the national employment rate for people with chronic mental illness, notably during a down economy.

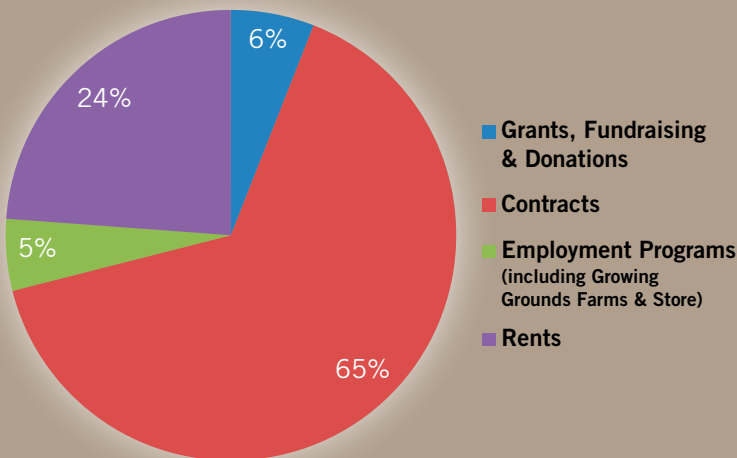
## TMHA Budget Trend

■ Total Operating Budget



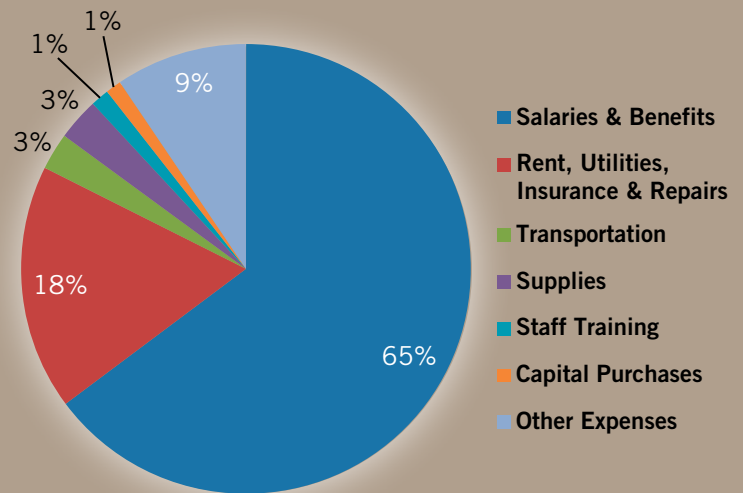
Transitions-Mental Health Association is committed to programs that truly support mental recovery and wellness. In a time of decreased public funding, never have private contributions and fundraising revenue been so vital to maintaining our quality programs and growing them to meet the need in our communities. Every, single donation makes a difference in the lives of our program participants.

## REVENUE



Total Revenue \$9,272,454

## EXPENSES

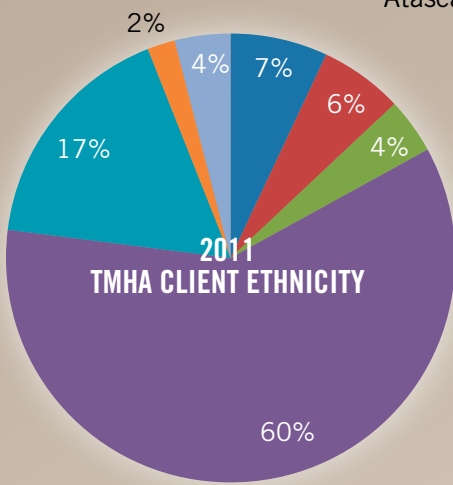
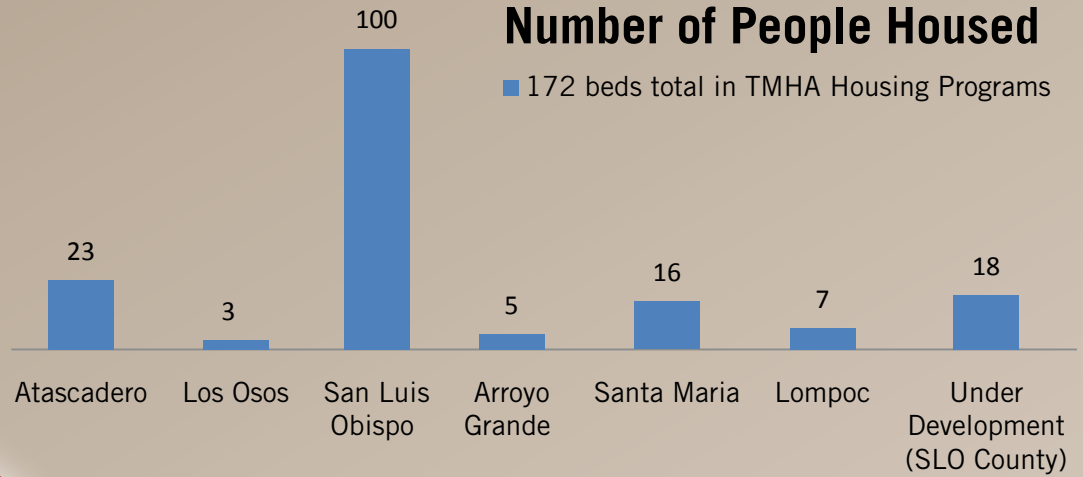


Total Expenses \$8,947,386

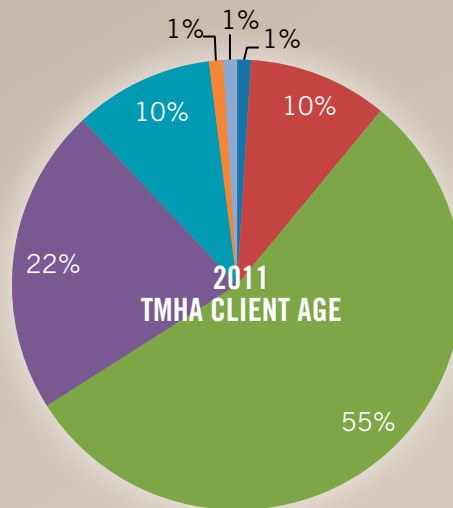
# 2011 TMHA CLIENT DEMOGRAPHICS

## Number of People Housed

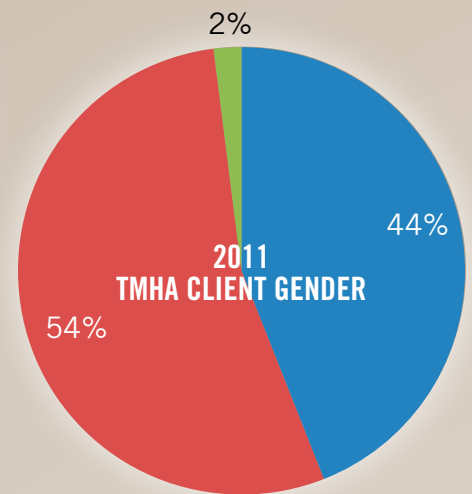
■ 172 beds total in TMHA Housing Programs



- African American
- American Indian/Alaskan Native
- Asian
- Caucasian
- Hispanic
- Native Hawaiian/Pacific Islander
- Other



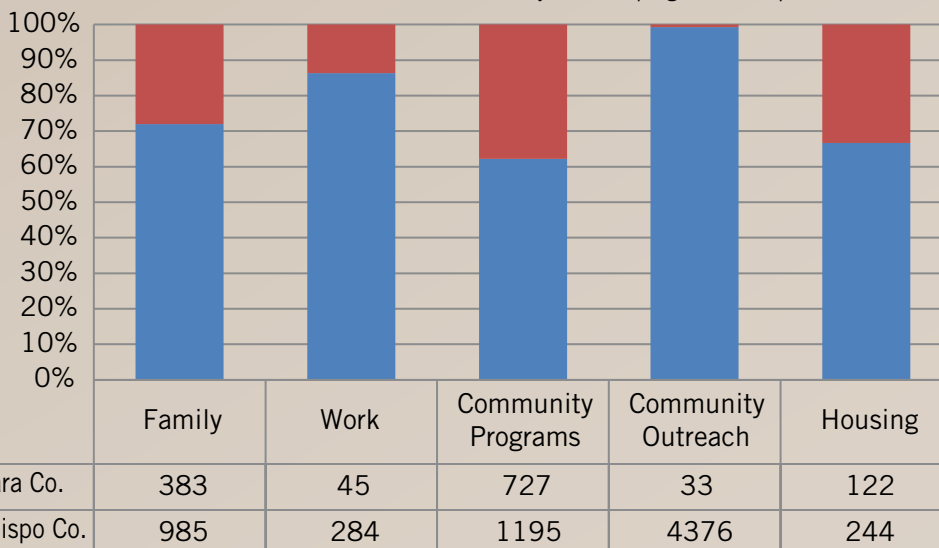
- 71+
- 41-59
- 18-25
- 60-70
- 26-40
- 11-17
- No Reply



- Female
- Male
- No Reply

## TMHA 2010-11 Clients Served

Please note that numbers are adjusted for program overlap.



	Family	Work	Community Programs	Community Outreach	Housing
■ Santa Barbara Co.	383	45	727	33	122
■ San Luis Obispo Co.	985	284	1195	4376	244

We have included a Community Outreach column to help illustrate all of the education we are doing in the community to eliminate stigma surrounding mental illness. These numbers also reflect SLO Hotline.